

FUEL SAMPLING AND ANALYSIS PROGRAM

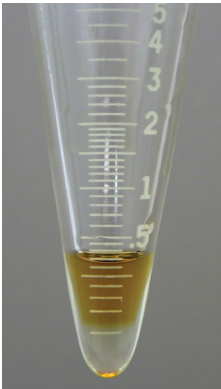


PROGRAM SPOTLIGHT

The propane industry is committed to maintaining the highest quality fuel possible. This PERC program offers as-needed testing of fuel samples to help marketers ensure this consistent fuel quality.

A fuel sampling program run by Southwest Research Institute is accepting fuel samples from marketers for testing. This thorough expert analysis can help marketers rule out fuel quality as a factor in equipment performance issues. In the rare case that

fuel variations play a role, SwRI will provide marketers with a detailed report and use the information gained to further strengthen the propane industry's ability to ensure the highest level of fuel quality.



INDUSTRY-WIDE PROGRAM BENEFITS

- Saves marketers the time and expense of performing their own fuel analysis.
- Enables a quick industry response to marketer requests and concerns.
- Provides baseline fuel analysis data that can inform future efforts to ensure high propane fuel quality.
- Demonstrates the propane industry's commitment to providing high-quality fuel to end users.



The fuel sampling kits include a 2.2-liter stainless steel cylinder [center] for collecting fuel, glass containers [top right] for collecting fuel deposit samples, and a manifold [lower left].

"Ensuring quality fuel is essential for the propane industry to not only retain current customers but to expand its reach into new markets."

— Southwest Research Institute

HOW TO SUBMIT SAMPLES

- 1** Call SwRI at 210-522-2817 or 210-522-3204 to request assistance.
- 2** Complete and return a brief questionnaire to help document the problem.
- 3** If the issue merits further investigation, SwRI will send you a sample collection kit and/or help arrange sample shipment.
- 4** After analyzing the sample, SwRI will send you the results, so you can take appropriate action, if needed.
- 5** At the completion of the program, SwRI will provide PERC with a summary of the contaminant and fuel quality problems found overall in the group of tested fuel samples."

FOR MORE INFORMATION:

Propane Education & Research Council

Gregory Kerr, Director of Research and Development
1140 Connecticut Ave. NW, Suite 1075 / Washington, DC 20036 / 202-452-8975

Southwest Research Institute

Scott A. Hutzler, Manager - Research and Development / 9503 W Commerce
San Antonio, TX 78227 / 210-522-6978

The Propane Education & Research Council was authorized by the U.S. Congress with the passage of Public Law 104-284, the Propane Education and Research Act (PERA), signed into law on October 11, 1996. The mission of the Propane Education & Research Council is to promote the safe, efficient use of odorized propane gas as a preferred energy source.